

ALARIS EnRoute/Approach



EVANS

DESIGNS & EQUIPS MISSION CRITICAL OPERATIONS

THE ULTIMATE ENROUTE/APPROACH CONSOLE SOLUTION

Surpassing Expectations

Based on direct feedback from ATC front line experts, EVANS has designed ALARIS specifically for the demands of EnRoute and Approach control operations. Designed to fit a new or modernized project, the aluminum structure of the console provides the durability required for 24/7 operations. Its innovative design, flexibility, and unique range of ATC specific features surpass the Air Traffic Control community's highest expectations.



ALARIS EnRoute/Approach

ALARIS EnRoute/Approach Consoles are engineered for maximum operational flexibility. Each console is tailored to the unique requirements of our customers taking into consideration every piece of equipment and its desired operator interaction. Operational flexibility allows equipment to be changed or reconfigured after installation, thus increasing the life expectancy and reducing total cost of ownership.

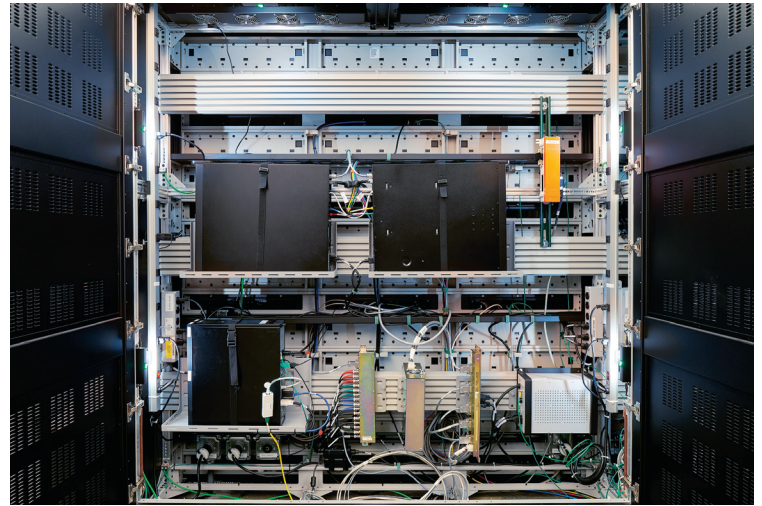
ALARIS EnRoute/Approach

Slatwall - The Versatile Mounting Backbone

The steel and aluminum panel slatwall is the main support structure for all of your mounted accessories. With this technology equipment can be installed and adjusted to fit the user's desired configuration making it extremely versatile and accommodating. The slatwall allows for flexible transitions with primary and secondary ATC displays. Traditional and newer flat panel ATC displays are supported and the slatwall also allows for older legacy systems to operate side-by-side with newer technology.

Flexible Solutions

Our Alaris EnRoute console solution supports the unique needs of both EnRoute and Terminal. The multiple levels of equipment mounting allows for endless customization to fit the needs and requirements of the space. Exceptional capacity provides safe storage for processors, cable management, and additional peripherals.



ALARIS EnRoute/Approach at a Glance

- User-centered design – customize your console
- Superior strength and durability
- Enhanced cable management with increased capacity
- Unlimited design configurations
- Slat system options for all your accessories
- Ease of reconfiguration extends life span

Proudly American Owned 