

# TECHNOLOGY TABLES



## TURN A STANDARD MEETING TABLE INTO A COMMAND CENTER

Evans' Technology Tables have been specifically designed to combine modern technology with traditional furniture for meetings. We start with a structural frame designed for 24/7 operations. Endless design possibilities are then integrated with advanced communication and presentation technology creating beautiful, functional tables for any conference or meeting room.



GREEN CERTIFIED BY  
EVANS CONSOLES

Sustainable Environment

Greenguard Certified  
CARB Compliant

LEED Contributions

Sustainable Processes

Product Manufacturing

## THE EVANS ADVANTAGE

Over **30 years** of manufacturing experience

Equalling over **9000 successful** installations worldwide

Rich and Diverse **Fortune 500** client list

Government Agencies, Oil & Gas, Airports, Air Traffic Control, Chemical Plants, Military **and More**

An **ISO 9001** Certified Manufacturer

Evans's Quality Assurance ensures that all clients consistently receive control center solutions that **precisely match** their intended application

**Greenguard** Certified Products

Products designed for use in office environments and other indoor spaces meet strict emissions limits, which contribute to the **creation of healthier interiors.**

**Steel** frame structure and sub structure

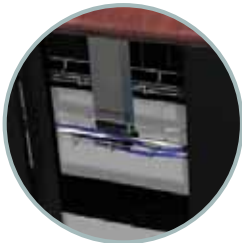
Free standing without the need of panels, robust and built to last the abuse of **24/7 intensive** use environments.

# TECHNOLOGY TABLE SOLUTIONS

With the touch of a button. Lift columns rise bringing data to your fingertips, turning meeting rooms into operations centers. Reveal monitors, keyboards, projectors, phones and even a podium. Integrated data and power ports slide open from hidden pockets to interface with laptops and peripherals. We work with Audio Video dealers to ensure the strictest of tolerances are met. Each table is a unique custom job tailored to any size or shape. We have a wide variety of laminates, veneers, and edge details, or custom inlay. Tables are designed, built and factory staged on site at Evans Consoles to ensure quality, then installed by Evans Certified Installers.



**Access Technology:**  
Raise or lower monitors, podiums, projectors, phones, whatever you need; at the touch of a button



**Cable Management:**  
Multiple internal raceways offer hidden cable management adapted specifically for tables.



**CPU Storage:**  
Fixed or door mounted CPU shelves or even rack mounts beneath the table surface. Properly housed and cooled by the steel frame structure.  
*\* CPU shelf where space permits*



**Ergonomics in Mind:**  
Our patented waterfall nosing, proper consideration for reach distance, knees space and many other features help keep users comfortable and healthy.

## CURRENT TECHNOLOGY TABLE CLIENTS



### EVANS CONSOLES

1577 Spring Hill Rd, Suite 450 | Vienna, VA 22182 | T: 855.284.1129  
1616 27th Avenue | Calgary, AB T2E 8W4 | T: 403.291.4444

info@evansonline.com | evansonline.com

Evans has achieved ISO 9001:2008 registration ensuring that the company meets a consistent quality standard for our control center designs, products and servicing

